

How to flash microSD card

In Wiser for KNX (W4K)

Application note

Generation 2

LSS100100

09/2018

rev. 1



Legal Information

The Schneider Electric brand and any registered trademarks of Schneider Electric Industries SAS referred to in this guide are the sole property of Schneider Electric SA and its subsidiaries. They may not be used for any purpose without the owner's permission, given in writing. This guide and its content are protected, within the meaning of the French intellectual property code (Code de la propriété intellectuelle français, referred to hereafter as "the Code"), under the laws of copyright covering texts, drawings and models, as well as by trademark law. You agree not to reproduce, other than for your own personal, noncommercial use as defined in the Code, all or part of this guide on any medium whatsoever without Schneider Electric's permission, given in writing. You also agree not to establish any hypertext links to this guide or its content. Schneider Electric does not grant any right or license for the personal and noncommercial use of the guide or its content, except for a non-exclusive license to consult it on an "as is" basis, at your own risk. All other rights are reserved.

Electrical equipment should be installed, operated, serviced and maintained only by qualified personnel. No responsibility is assumed by Schneider Electric for any consequences arising out of the use of this material.

As standards, specifications and designs change from time to time, please ask for confirmation of the information given in this publication.

Trademarks

- Microsoft Windows®, Windows 7®, Windows 10® and Internet Explorer® are trademarks or registered trademarks of the Microsoft Corporation in the USA and/or other countries.
- iTunes™ is a registered or unregistered trademark of the Apple Inc. in the USA and/or other countries.
- Google Chrome™, Google Play™, Google Maps™ and YouTube™ are trademarks or registered or unregistered trademarks of the Google Inc. in the USA and/or other countries.
- Firefox® is a trademark or registered trademark of the Mozilla Corporation in the USA and/or other countries.

Important Safety Information

Read these instructions carefully and look at the equipment to become familiar with the device before trying to install, operate, service, or maintain it. The following special messages may appear throughout this manual or on the equipment to warn of potential hazards or to call attention to information that clarifies or simplifies a procedure.



The addition of either symbol to a “Danger” or “Warning” safety label indicates that an electrical hazard exists which will result in personal injury if the instructions are not followed.



This is the safety alert symbol. It is used to alert you to potential personal injury hazards. Obey all safety messages that follow this symbol to avoid possible injury or death.

DANGER

DANGER indicates a hazardous situation which, if not avoided, **will result in** death or serious injury.

WARNING

WARNING indicates a hazardous situation which, if not avoided, **could result in** death or serious injury.

CAUTION

CAUTION indicates a hazardous situation which, if not avoided, **could result in** minor or moderate injury.

NOTICE

NOTICE is used to address practices not related to physical injury.

Table of Contents

1	Introduction	8
1.1	Competencies	8
1.2	System prerequisites	8
2	What to install?	9
2.1	Installing USB Image Tool to you computer	9
3	Configuration	10
3.1	W4K's hardware versions	10
3.2	Preparing microSD card	11
3.2.1	Creating new microSD card with W4K's firmware	12
3.2.2	Making a backup/copy of existing microSD card	14
4	Appendix	16
4.1	Reference	16

Please note

Electrical equipment should be installed, operated, serviced, and maintained only by qualified personnel. No responsibility is assumed by Schneider Electric for any consequences arising out of the use of this material.

A qualified person is one who has skills and knowledge related to the construction, installation, and operation of electrical equipment and has received safety training to recognize and avoid the hazards involved.

Safety Precautions

WARNING

HAZARD OF INCORRECT INFORMATION

- Do not incorrectly configure the software, as this can lead to incorrect reports and/or data results.
- Do not base your maintenance or service actions solely on messages and information displayed by the software.
- Do not rely solely on software messages and reports to determine if the system is functioning correctly or meeting all applicable standards and requirements.
- Consider the implications of unanticipated transmission delays or failures of communications links.

Failure to follow these instructions can result in death, serious injury, or equipment damage.



Attention - the information provided must be complied with, otherwise program or data errors may occur.



Note - You will find additional information here to make your work easier.

The information provided in this documentation contains general descriptions and/or technical characteristics of the performance of the products contained herein. This documentation is not intended as a substitute for and is not to be used for determining suitability or reliability of these products for specific user applications. It is the duty of any such user or integrator to perform the appropriate and complete risk analysis, evaluation and testing of the products with respect to the relevant specific application or use thereof. Neither Schneider Electric nor any of its affiliates or subsidiaries shall be responsible or liable for misuse of the information that is contained herein. If you have any suggestions for improvements or amendments or have found errors in this publication, please notify us.

No part of this document may be reproduced in any form or by any means, electronic or mechanical, including photocopying, without express written permission of Schneider Electric.

All pertinent state, regional, and local safety regulations must be observed when installing and using this product. For reasons of safety and to help ensure compliance with documented system data, only the manufacturer should perform repairs to components.

When devices are used for applications with technical safety requirements, the relevant instructions must be followed.

Failure to use Schneider Electric software or approved software with our hardware products may result in injury, harm, or improper operating results.

Failure to observe this information can result in injury or equipment damage.

© 2018 Schneider Electric. All rights reserved

1 Introduction

This application note describes procedure of restoring firmware image of W4K either to update/backup it or in case of microSD card failure.

A reference is available in the appendix chapter of this document. Please refer to it whenever necessary.

1.1 Competencies

This document is intended for readers who have been trained on W4K or spaceLYnk products and have at least intermediate computer skills. Administrator rights for PC will be required as 3rd party software will be installed.

1.2 System prerequisites

Software	Version	Download
Wiser for KNX	2.3.0	http://www.schneider-electric.com
USB Image Tool	1.75	http://www.alexpage.de/usb-image-tool/download/

Table 1: Used software.

2 What to install?

In this chapter there is explained what tool to install to your computer, what this tool requires and where to get it for successful flash of microSD card.

2.1 Installing USB Image Tool to you computer

USB Image Tool is small freeware utility to create image files of flash drives, restore images of flash drives, create compressed image file format, reveal devices information, and manage your image files.

Download USB Image Tool here: <https://www.alexpage.de/usb-image-tool/download/>

Unzip USB Image Tool to the folder in your PC. No further installation needed.



USB Image Tool requires the .NET Framework 4.0 and Windows XP or higher. The usbit32.dll included in the archive must be in the same directory as the EXE file. The command line utility doesn't require the .NET Framework nor the usbit32.dll.

You can download .NET Framework here: <https://www.microsoft.com/en-us/download/details.aspx?id=17851>

3 Configuration

In this chapter you can read where to find a version of a device, which processor they have and about preparation and creating new microSD card. There is also something about making a backup or copy of existing microSD card.

3.1 W4K's hardware versions

There are two versions of W4K's hardware. Hardware version can be found on the sticker of W4K's cabinet.



Figure 1: HW version marking.

Older version for all hardware versions with IMX28 processor: HW versions 1.x.

New version with IMX6 processor: HW version 2.x and version HW 3.x It can be also easily recognized due to the reset button on the front side.



Figure 2: W4K HW 2.x with front reset button.

3.2 Preparing microSD card



We strongly recommend using only branded quality microSD cards of same or bigger size as the card originally used in W4K. Failure of microSD card cause W4K will stop work and will not be accessible.

Remove micro SD card from W4K device. If it is already mounted into the cabinet, micro SD card can be reached by simply opening top part of W4K cover (from HW version 1.3).



Never remove micro SD card while W4K is ON and power supply is present.

Always discharge any possible static electricity charge which may be present at your body. Flash card are extremely sensitive to overvoltage and may be damaged or even destroyed when exposed by such conditions.

You can use dedicated securely Earthed points. If you are on the building site, heating and water installations are grounded/earthed and therefore can be used as makeshift grounding points.



Figure 3: W4K without top cover with microSD card ready to be removed.



Note that when you will insert the flash card into PC, Windows will automatically ask for card format as it will not recognize Linux based files, choose NO.

There are 2 types of W4K case. The first is with removing top part as it's on the left in figure 4. The second is with removable bottom as on the right in figure 4. How to replace spaceLYnk you can see here: https://youtu.be/jwyTh1LFX_s

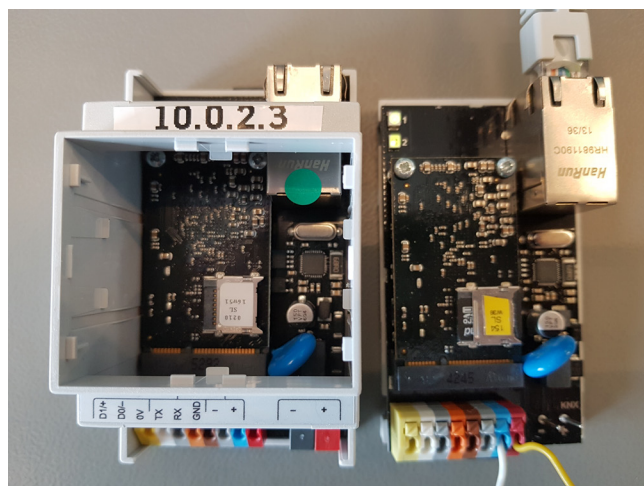


Figure 4: Cases of W4K.

3.2.1 Creating new microSD card with W4K's firmware

Download copy of recovery image to your computer. It is attached to this Application Note.



There are two versions recovery matching versions of hardware see chapter 3.1 W4K's hardware versions for details. Both versions are attached to this application note.

Recovery file name for old hardware: W4K_HW1_xx_recovery.img.gz

Recovery file name for new hardware: W4K_HW2_xx_3_xx_recovery.img.gz

Open USB Image tool, click Reset. Format your microSD card (with software "*Create or format hard disk partitions*" - on Windows OS, right click on partition and choose *Format*). Select propriate version of recovery image, unzip it and *Restore* it to your card.



Note that when you will insert the flash card into PC, Windows will automatically ask for card format as it will not recognize Linux based files, choose NO. All data will be erased/overwritten.

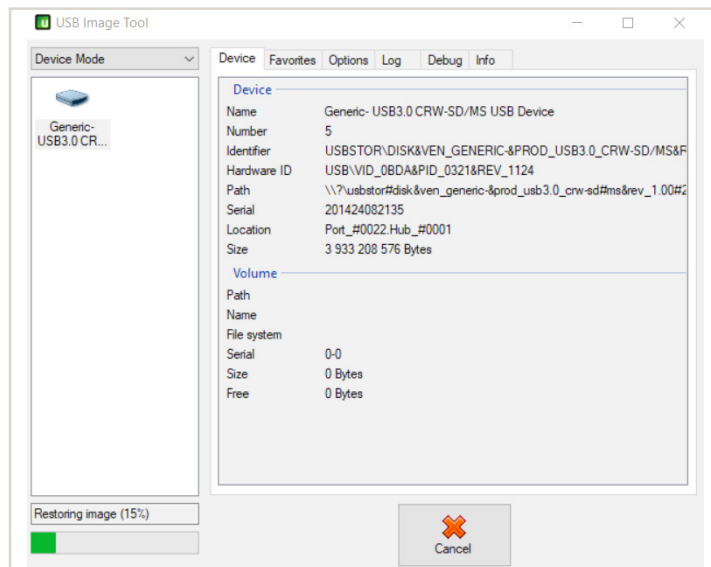


Figure 5: Restoring firmware image in USB Image Tool.

Insert card to your W4K, power it up and open supported web browser.

Connect to your W4K using default IP address 192.168.0.10. Clear browser cache.

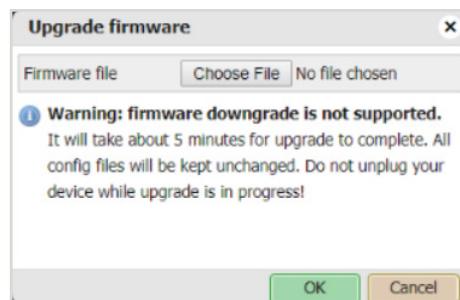


Figure 6: Initial message during firmware restoration.

Select desired version of firmware downloaded from:

<https://www.schneider-electric.com/en/download/range/62143-Wiser%20for%20KNX/?docTypeGroup=3541958-Software%2FFirmware>

After approximately 5 minutes you will be able to access your W4K in default settings.



We recommend using up to date version of firmware (you can find it here named Wiser_for_KNX_Firmware_v.2.3.0_HW_2_X_X_HW_3_X_X (zip): <https://www.schneider-electric.com/en/product/LSS100100/wiser-for-knx-logic-controller/#search>) with exception if you are restoring W4K in already existing installation. You can keep version already used to secure compatibility of all features.

3.2.2 Making a backup/copy of existing microSD card

In case you use the native microSD from the device, make sure you have done a backup of your configuration and project.

If you have another working flash card, you can insert it into the PC where USB Image Tool is installed, run the program as administrator, choose the disk drive and BACKUP the flash image. It will take full size of the flash card's capacity on your local PC's storage. Select folder destination and image name convenient for you.

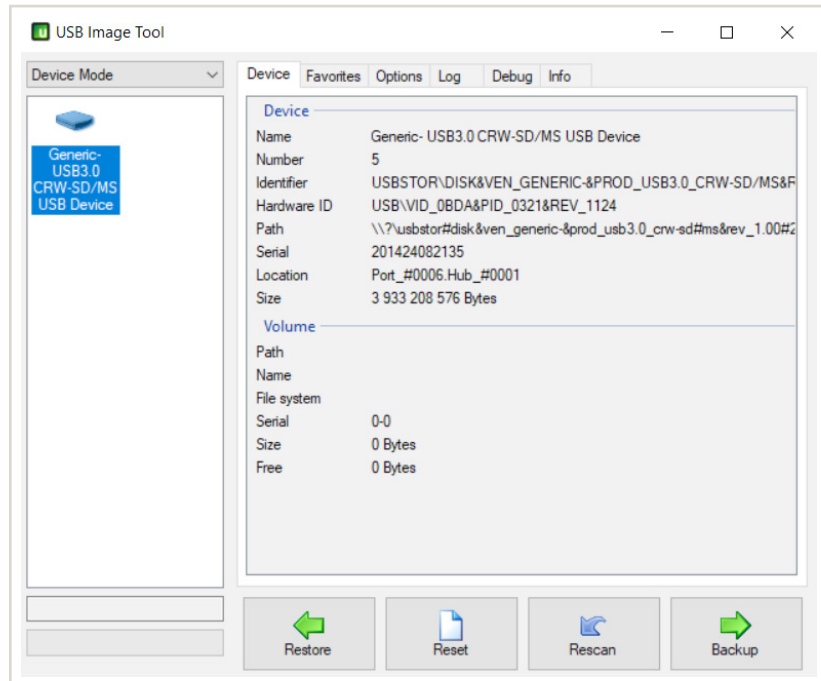


Figure 7: USB Image Tool environment.

Insert empty microSD card of same or bigger size of the card originally used in W4K. Select backup file location and press RESTORE.



If you use card bigger than original one you will lose access to all excessive space. If card size differ from existing card, which is possible even if you use same size card of different type or manufacturer you will get error message.

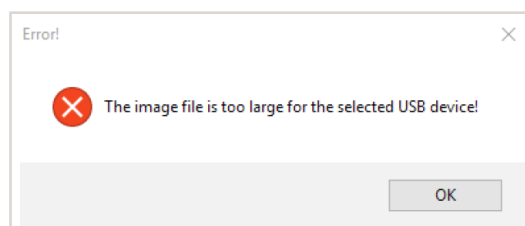


Figure 8: Error message.

You can solve this by go to USB Image Tool Option tab and select "Truncate oversize images in device mode".

Option "Show completion message after operation" is also useful and recommended to be activated.

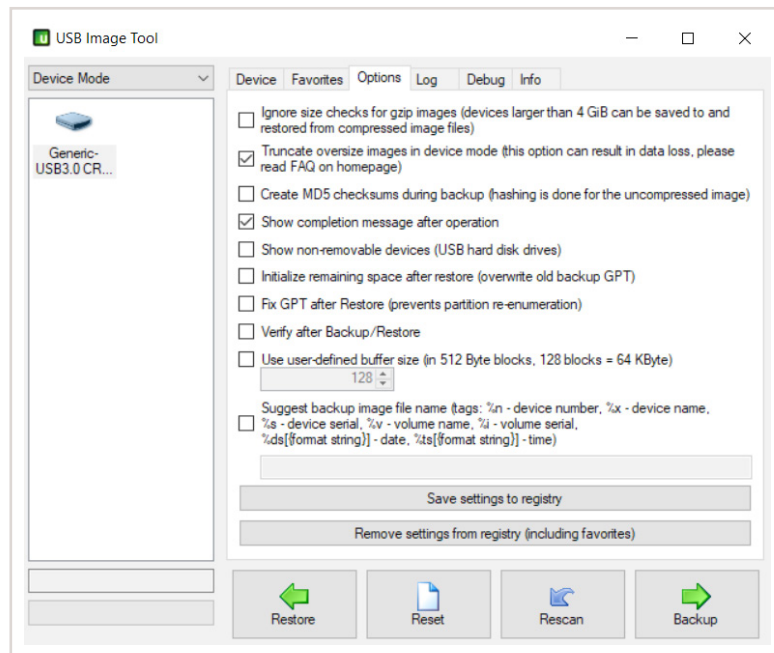


Figure 9: USB Image Tool Options tab.

Successfully restored micro SD card then can be inserted into the W4K. It is highly recommended to upgrade W4K software to latest version with exception of W4K's already deployed in live installations.

4 Appendix

In this chapter you can find useful links for tools, firmware and other things which can help to successfully go through this application note.

4.1 Reference

Document title	Reference
USB Image Tool	http://www.alexpage.de/usb-image-tool/
W4K manual	http://download.schneider-electric.com/files?p_enDocType=User+guide&p_File_Name=AR1740_Edl_User_Wiser_for_KNX_EN.pdf&p_Doc_Ref=AR1740_Edl_EN
W4K firmware (always check proper version for your hardware)	https://www.schneider-electric.com/en/download/range/62143-Wiser%20for%20KNX/?docTypeGroup=3541958-Software%2FFirmware

Table 2: Reference.



Schneider Electric

35 rue Joseph Monier

92500 Rueil Malmaison – France

Phone: +33 (0) 1 41 29 70 00

www.schneider-electric.com

As standards, specifications, and designs change from time to time, please ask for confirmation of the information given in this publication.

© 2014-2018 Schneider Electric. All rights reserved.

LSS100100 Rev. 1



This document has been
printed on recycled paper.